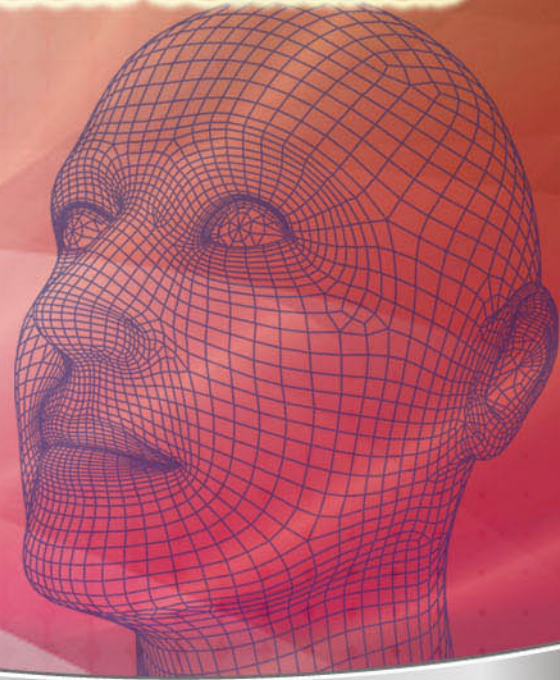


# Multi-Biometric Identification Terminal



## MultiBio 700



Support Facial identification method  
(High Definition Infrared Camera)



Support Fingerprint identification method



3 Inch touch screen



connection interface

The speaker



## SKETCH DIAGRAM



## SPECIFICATIONS

### MultiBio 700

#### LCD Display / Speaker

3 Inch Touch Screen / Voice prompt (language can be selected)

#### Capacity

Face: 3,000 Fingerprint: 5,000

Logs: 100,000 ID Card: 10,000(optional function)

#### Cameras

High Resolution Infrared Cameras (One of them catch color)

#### Verification

Verification speed (1:1) ≤ 0.5s

Identification speed (1:1) ≤ 1s

#### Identification / Communications

FRR ≤ 0.01% FAR ≤ 0.0001% / TCP/IP, RS232/485, USB Host

#### CPU / Memory

Multi-Bio CPU 630MHz / 256M flash, 64 SDRAM

#### Access control Interfaces for

3rd party electric lock, door sensor, alarm, wired, bell and exit button

#### Language

Multi language, English, French, Spanish, Arabic, Turkish, Portuguese, Czech, Hebrew, Slavic, Vietnamese etc., for more than 40 languages can be selected

#### Environment

Operation temperature: 0°C-45°C

Operation humidity: 20%-80%

#### Power Supply / Machine size

110/220 VAC-12VDC 3A / 275(L)\*100(W)\*195(H)mm

#### Hardware Platform / Fingerprint Sensor

ZEM600 / Optical Sensor

#### Wiegand Signal / Optional Functions

Wiegand in and out / ID Card, Mifare card

#### Anti-pass back Function / Gross Weight

OK / 0.87 kg